

Andreja Premium Direct Connect Installation Instructions
Chris' Coffee Service

1. Remove the outer shell.

If you do not already know how to do so, see our instructions under “Removing Outer Shell.”

2. Mount solenoid valve to the back panel.

Remove the rubber grommet from the back panel and insert male thread of stainless nut through the back panel coming from the exterior side. Connect it securely to the solenoid valve. Use a 20mm wrench or an adjustable wrench to tighten the nut.

Note: Always use Teflon tape on all male threads. Be careful not to scratch the back panel. See Image #1.

3. Disconnect magnetic float switches. If your relay looks like the one in Image #2 you do not need to do anything else. If your relay looks like the one in image #3 then you need to jumper the switches with the jumper wires provided as shown in Image #4.
4. Attach silicone tubing to black plastic discharge tube it's approximately 2" long.

The tubing you are going to attach is the one that is approximately 22" long, coming from the tee shown in Image #5. You are attaching the black plastic piece to the end of the tubing that was in the plastic water tank. See Image #6

Note: It's a lot easier to slide the end of the silicone tubing over the fitting if you first submerge the tubing in hot water.

5. What you are doing is rerouting the discharge tube that comes from your expansion valve, from it's original position, in the water tank and diverting it to the drip tray.

Note: It is normal for water to come out of the newly installed black plastic discharge tube into your drip tray. The rate of flow will vary with the amount of resistance. In other words when you have your blank in place and are back flushing more water will come out than when you are simply running water through the group to cool down the water in your heat exchanger.

6. Install the black plastic discharge tube.

Andreja Premium Direct Connect Installation Instructions
Chris' Coffee Service

This is the hardest part. You now need to insert the end of the black plastic discharge tube through the front panel of the machine as seen in Image #7. It is often a very tight fit and might even require a little filing to enlarge the hole slightly.

Note: It is easier if you move the Gicar control board to the side by removing the screw securing it to the frame. If you have small hands, you might be able to get your hand in there without removing the control board to get the tube started, but the extra room is helpful.

7. Remove the two wires on the pump.

Take the wire harness provided with this kit and connect the white and blue wire onto the pump where you just took the other two wires off.

Note: The ends with the piggyback connectors go onto the pump.

Reattach the two wires you originally took off the pump to the piggyback connectors as shown in Image #8.

8. Connect the green piggyback connector to the connection on the terminal block that already has a green ground wire connected to it as shown in Image #9. Pull the green connection off the terminal block and slide it onto the piggyback provided and reattach.
9. Insert the rubber grommet provided with the kit into the bottom of the stainless steel shelf that the water tank used to sit on. Now insert the three wires, blue, white, and green, through the grommet one at a time as shown in Image #10.
10. Put the body back on the machine and replace the four screws in the lower back.

Note: It is not yet necessary to replace the two screws in the front where the drip tray goes.

11. Connect the blue, white, and green wires to solenoid valve on back panel. Blue and white on top and green on the bottom as shown in Image #11.
12. Connect the silicone tube onto the barbed top of the solenoid valve, as shown in Image #11.

Note: Remember it is easier to slip on the tubing if you first soak it in hot water.

13. Pop the back panel on and replace the two screws on the top of the back panel.
14. Turn the machine around and replace the two countersunk screws from the sidewall where the drip tray slides in.

Andreja Premium Direct Connect Installation Instructions
Chris' Coffee Service

15. Connect the braided water line to the fitting protruding from your back panel making sure not to forget the green washer provided with this kit. See Image #12.
16. Connect to water supply and check the pressure on the regulator. It is very important that it not exceed 0.75 bar. The gauge should read between 0.5 and 0.75 bar. Higher pressure could cause the tubing connected to the barbed fitting to pop off.

Andreja Premium Direct Connect Installation Instructions
Chris' Coffee Service



Image # 1



Image # 2



Image # 3

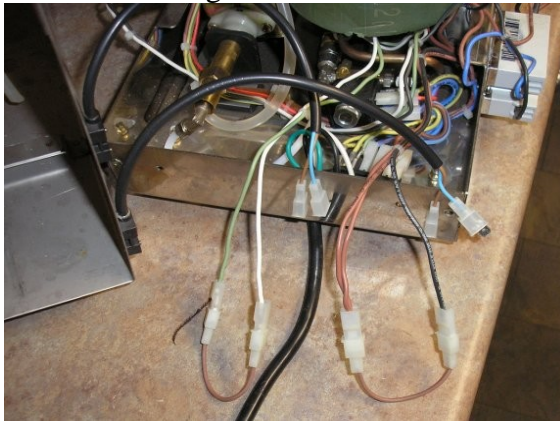


Image # 4



Image # 5



Image # 6

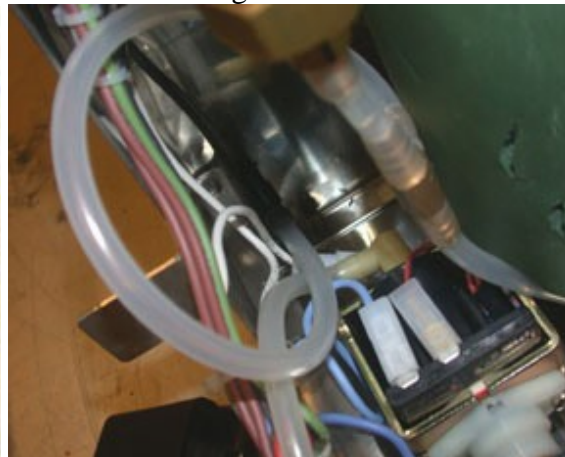


Image # 7

Andreja Premium Direct Connect Installation Instructions
Chris' Coffee Service

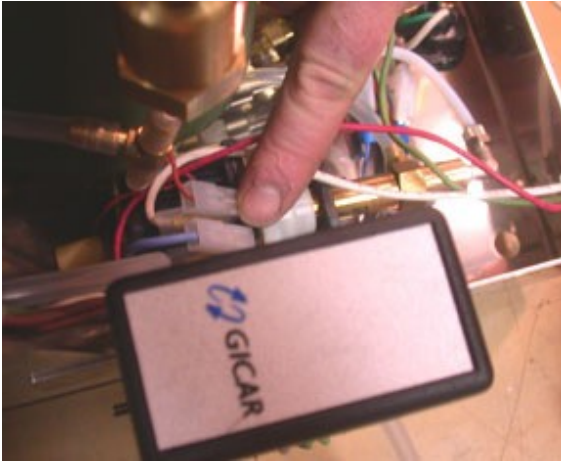


Image # 8



Image # 9

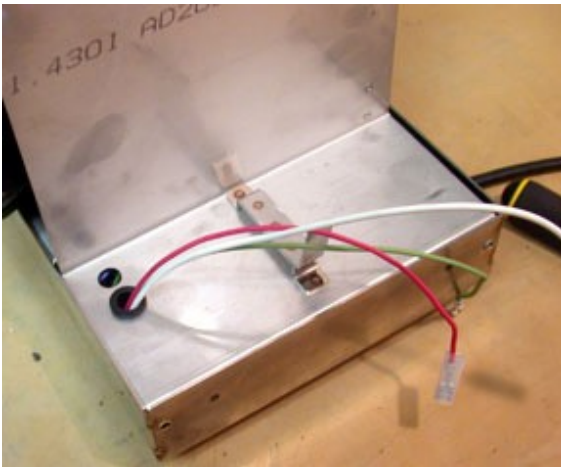


Image # 10

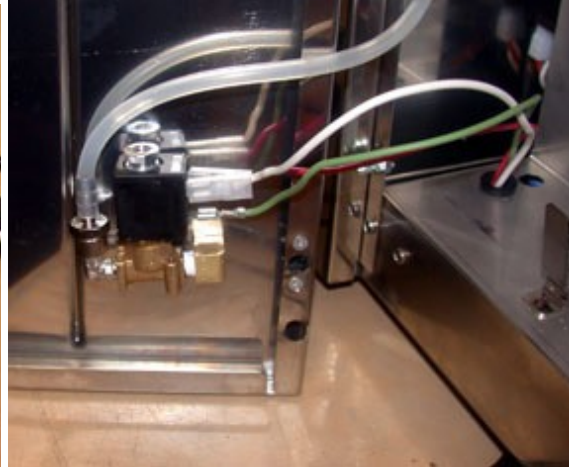


Image # 11



Image # 12



Image # 13